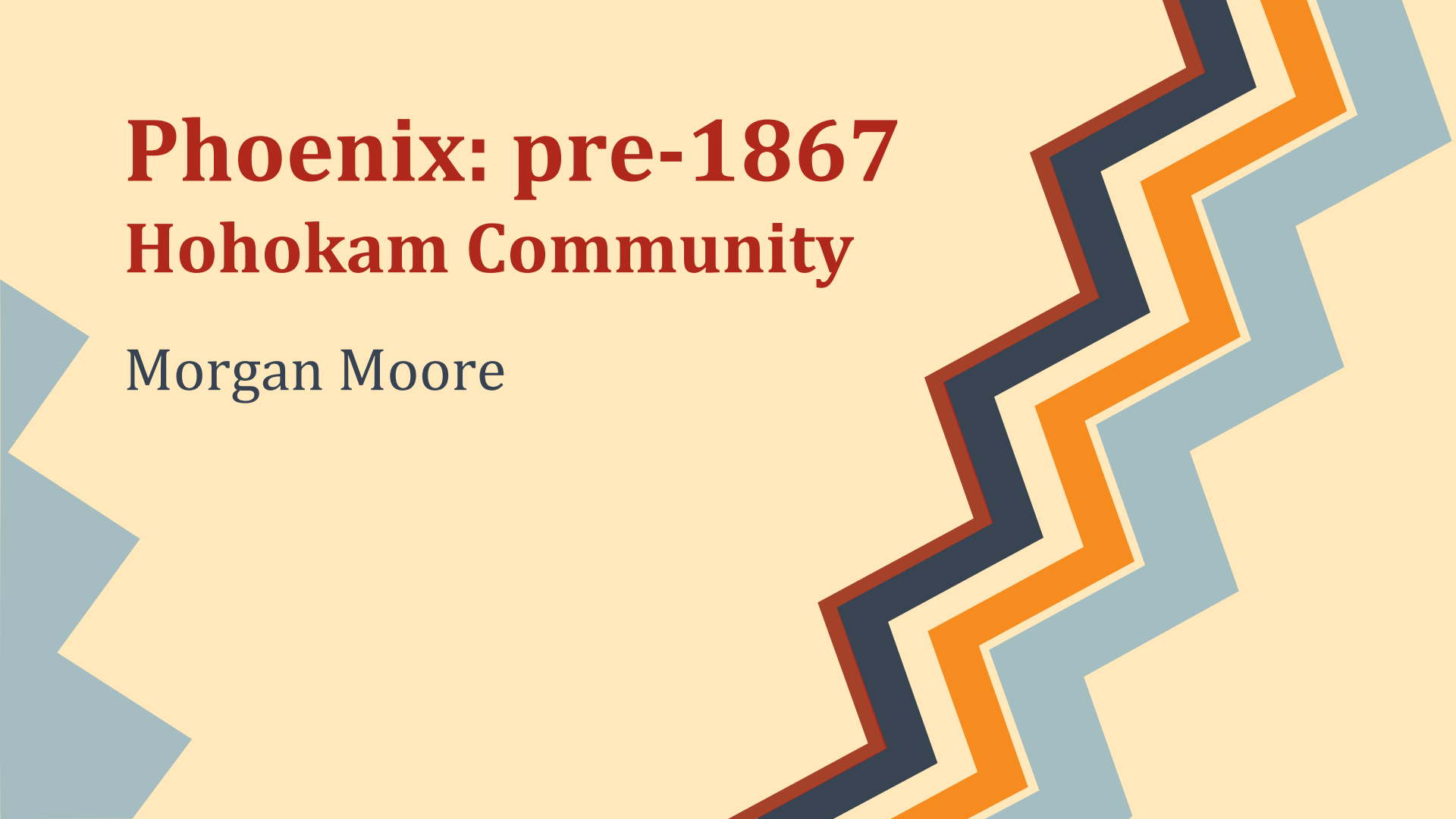


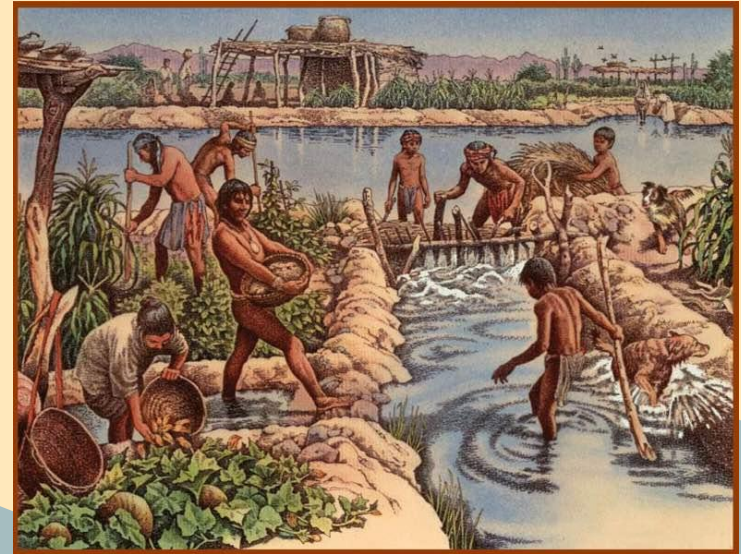
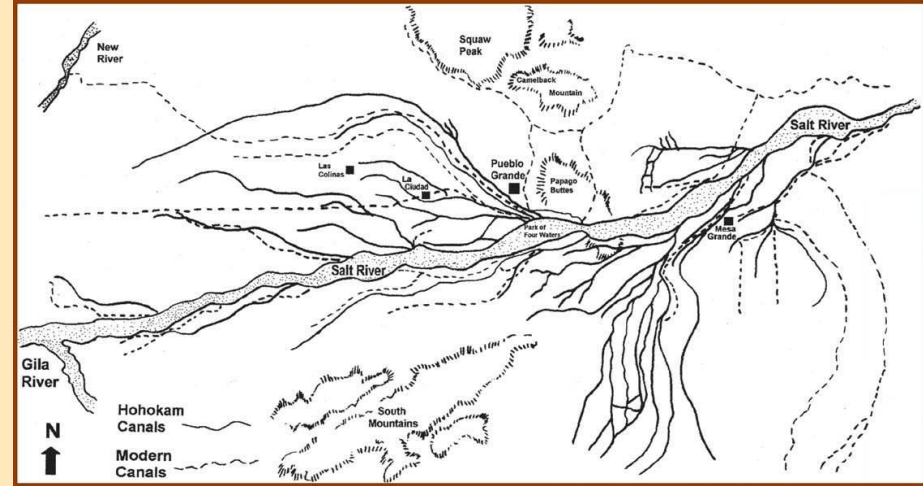
Phoenix: pre-1867 Hohokam Community

Morgan Moore



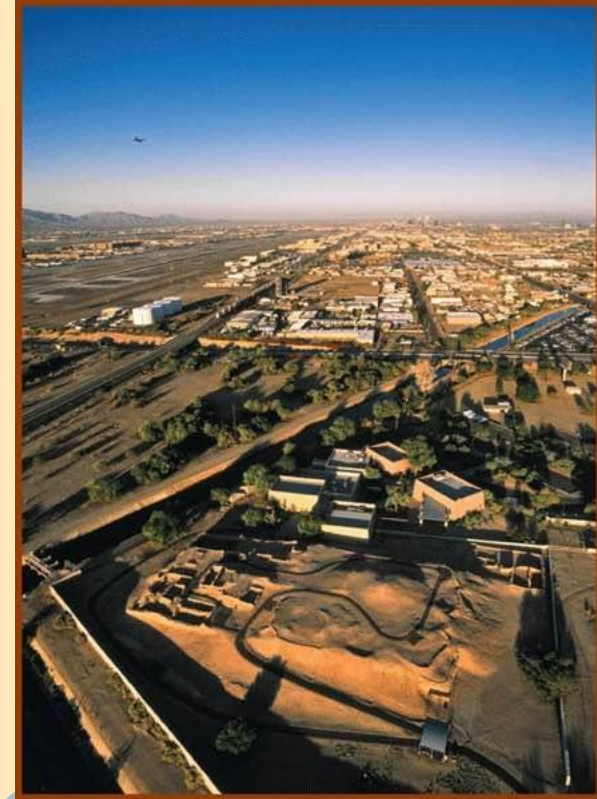
Civic Life

- linear, urban communities
- cooperative social organization
- centered around irrigation system



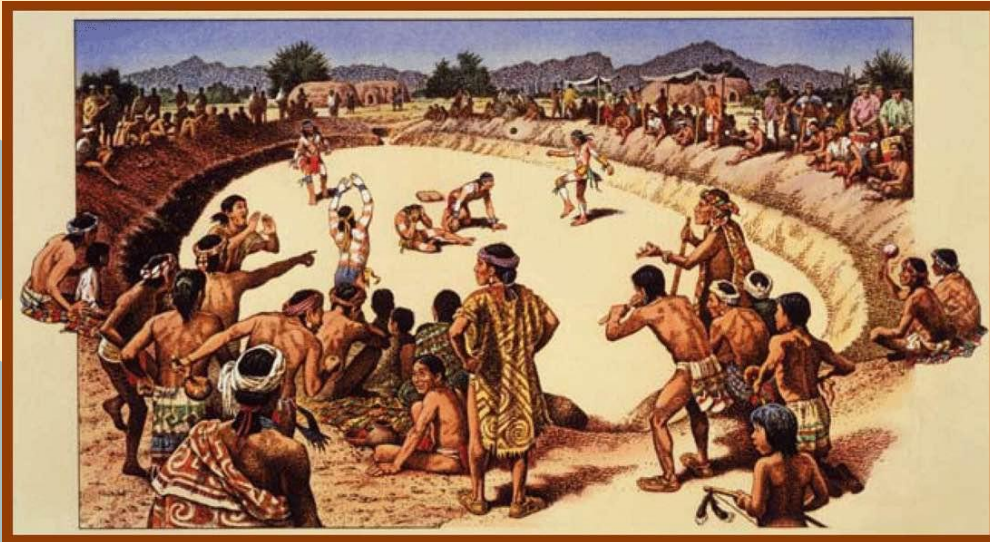
Built Environment

- ball courts, towers, “Great Houses”
- pit houses, evolved housing
- platform mounds
- irrigation system



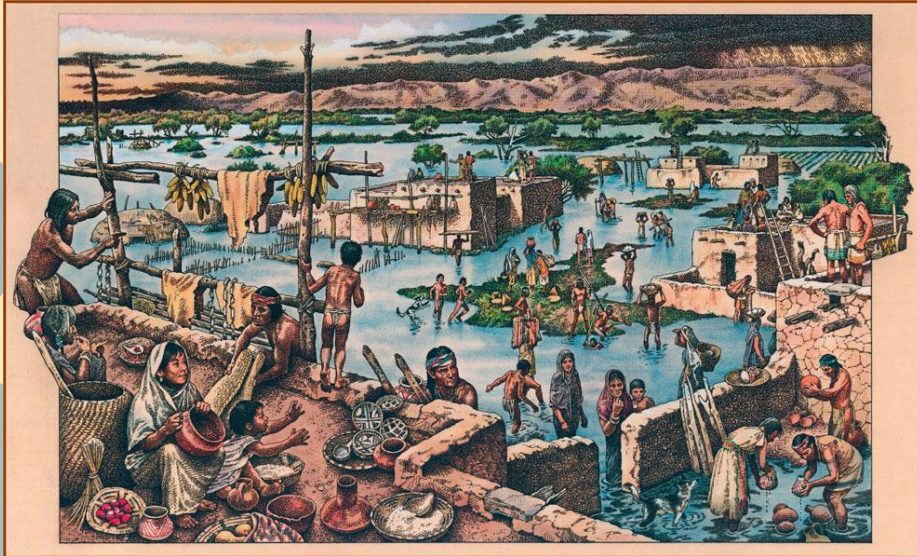
Major Assets

- arts
- community-oriented development
- trade
- ritual



Major Challenges

- nature, weather
- migrants causing political conflict
- depleted resources, growing population



Characteristics of Public Administration

- administration centered on irrigation
- complex problem-solving
- cooperative

